



eProductivity
Software

+

ECO3

Empowering
Print Success



APOGEE



Your Partners in Print

eProductivity Software (ePS) and ECO3 have joined forces to offer you an unparalleled cloud-based workflow solution, seamlessly integrating every aspect of the production process. From managing individual tasks to orchestrating complex jobs with multiple components through Apogee, the partnership aims to deliver a comprehensive solution tailored to your needs. With a unified user interface, you gain full control over every phase of production, enhancing efficiency and productivity across your operations.

Experience the power of seamless integration and streamlined workflows with ePS and ECO3. This collaborative effort will ensure that users receive top-notch solutions in a rapidly changing and complex market.

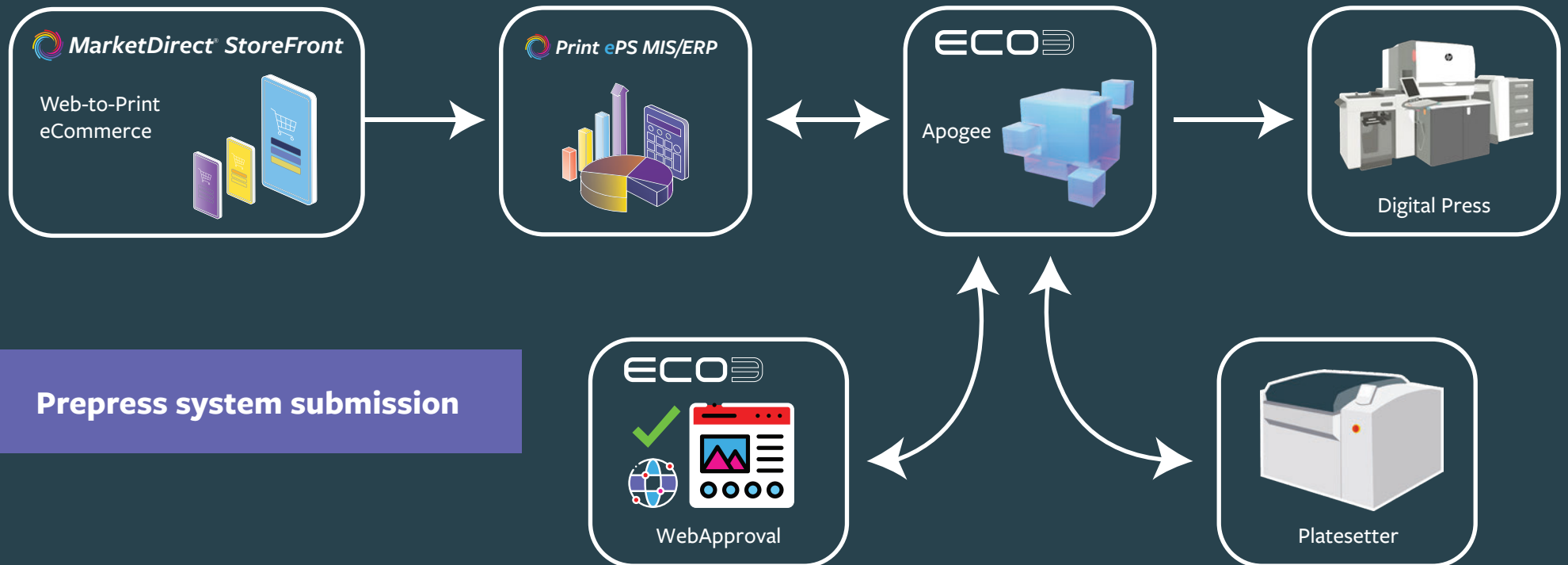
Certified end-to-end workflows that empower



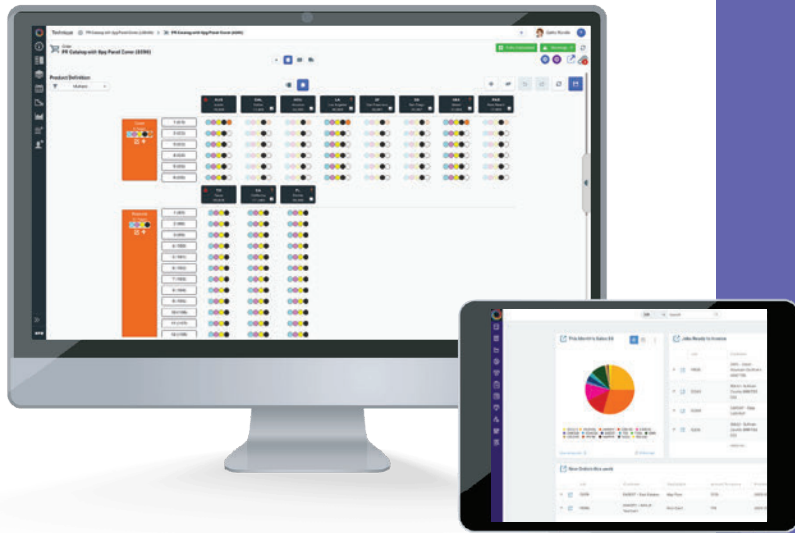
Where every job begins

ePS and ECO3 are dedicated to enhancing the customer experience through their partnership. ECO3's preflight technology can assess files from ePS's MarketDirect StoreFront, offering color evaluation and routing to cut production costs on digital presses.

Certified workflows provide clear guidance on integrating ePS solutions like ePS Pace MIS/ERP or ePS Technique MIS/ERP with the ECO3 platform. For example, the Technique/ECO3 Apogee workflow automates versioning orders, while Pace manages print buyer messages from Apogee WebApproval, ensuring a smooth integration process, helping customers maximize their investment value.



Print ePS MIS/ERP Solutions



ePS offers scalable, and customizable print MIS/ERP solutions purpose-built to streamline core business functions for printers. From costing and inventory management to job control and scheduling, they provide a comprehensive suite of tools to optimize print production processes. With certified end-to-end workflows, ePS delivers out-of-the-box value by increasing operational efficiencies, maximizing profit potential, and reducing touchpoints in operations.

ePS Pace MIS/ERP is a dedicated solution crafted to meet the diverse demands of the print industry, offering solutions for commercial printing, digital printing, wide format printing, and specialty and customized printing.

ePS Technique MIS/ERP is a solution designed to tackle the challenges of publication printing, offering streamlined workflows, reduced manual interventions, and enhanced overall efficiency.

MarketDirect® StoreFront

MarketDirect® StoreFront from ePS is a robust, turnkey eCommerce solution that empowers print businesses to leverage web-to-print for growth. It provides all that's needed to quickly and easily create digital storefronts that attract new customers and expand products or service offerings — even create dedicated web-to-print storefronts that can provide integrated print and fulfillment services to customers.

For businesses wanting to add eCommerce and web-to-print capabilities, MarketDirect Storefront provides a comprehensive toolkit that includes:

- eCommerce site-building tools
- Production automation
- Optimization tools
- Customer engagement marketing tools
- Powerful variable printing options
- Customer management tools
- Invoicing, shipping, and reporting
- Seamless data integration



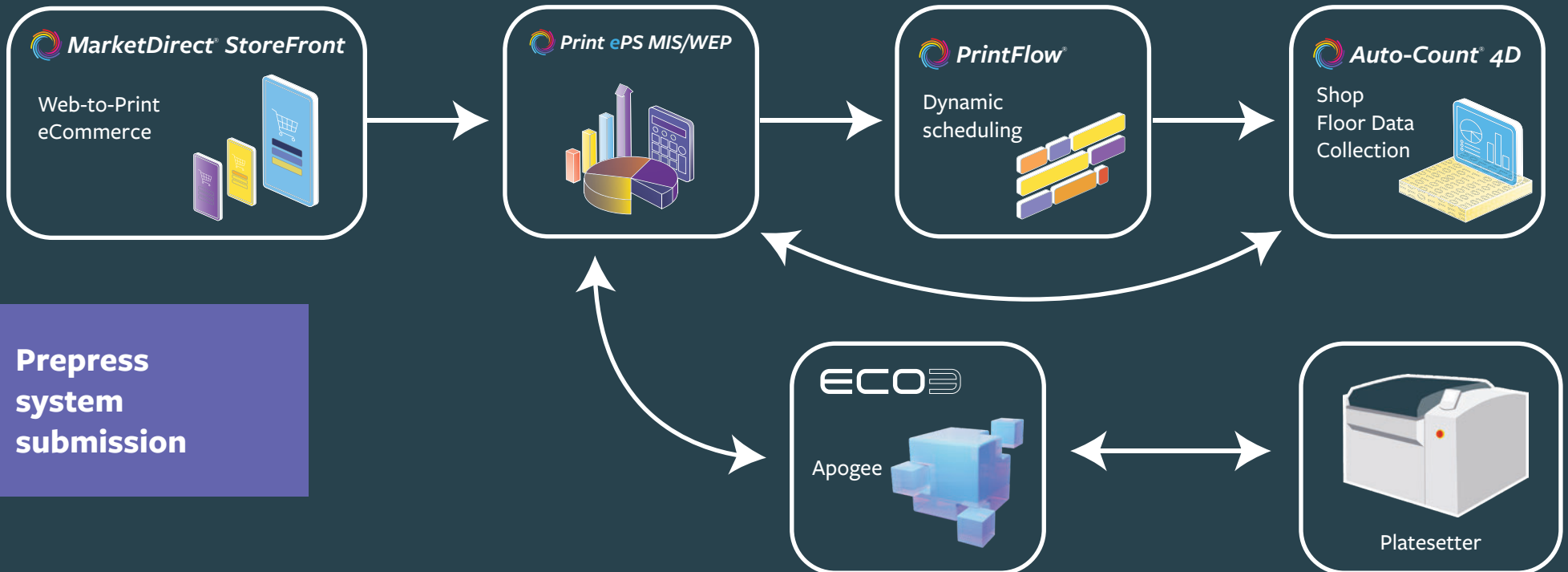
Unmatched accuracy & efficiency

The integration between Print ePS MIS/ERP solutions, PrintFlow®, Auto-Count® 4D, and ECO Apogee enables you to quickly and accurately prepare different types of estimates, convert them into jobs, and view the entire job plan at a glance. You can then send the jobs to Apogee and add input files, output the plates/proofs, accurately schedule the jobs using PrintFlow, and then run the jobs using Auto-Count providing you with:

- Complete end-to-end business integration
- Multi-language, multi-currency, multi-company, and multi-plant flexibility
- Flexible standard estimating and production workflows for labels and folding cartons

With PrintFlow, you can optimize the print schedule and all the dependent finishing processes to deliver the final product and keep production moving along at full speed, with no slowdown between jobs.

Auto-Count 4D can operate as a truly headless system, or you can use the interface directly for a view of every machine in your shop—anytime, anywhere, and on any device. And for full transparency, all job costing data, such as time, substrate, and quantity is sent back to Print ePS MIS/ERP solutions so that you'll know exactly what it took to finish every job, every time.





PrintFlow[®]

Dynamic scheduling and resource optimization



A dynamic scheduling and resource optimization solution, ePS PrintFlow increases visibility to help you shift from reactive to proactive production management and handle more jobs with your existing equipment.

PrintFlow can help you:

- Automatically create optimal production sequences for every job, task, and employee to maximize capacity and throughput based on available resources
- Empower schedulers to manage exceptions and downtime by modeling “what-if” scenarios that can identify and minimize potential impacts to production
- Identify and reduce costly inefficiencies through real-time schedule and job status updates



Auto-Count[®] 4D

Real-time shop floor data intelligence



Achieve greater speeds, higher accuracy, and improved quality. Understand true manufacturing costs and make proactive, data-driven decisions anywhere, at any time, and from any device.

Auto-Count 4D enables you to:

- Collect and record up-to-the-minute data via DMI to stay on top of maintenance schedules, troubleshoot potential problems, and reduce waste
- Streamline job status updates, track downtime, and identify needs while reducing time spent on internal communications
- Review production data anywhere, at any time, from any device to help you make timely, cost-effective decisions

Apogee Workflow Solution

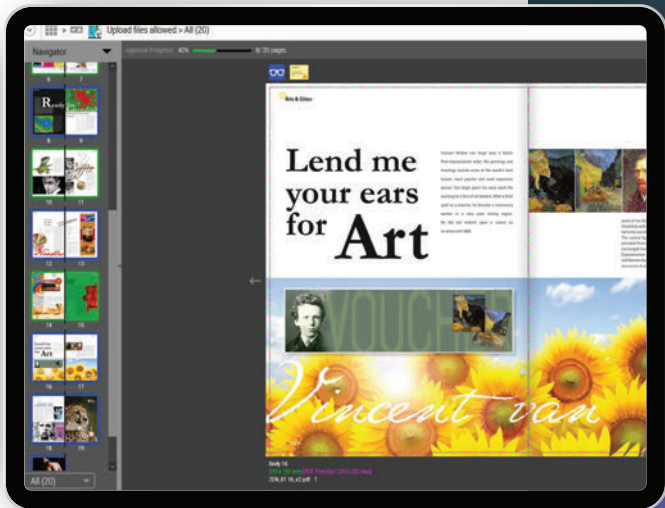
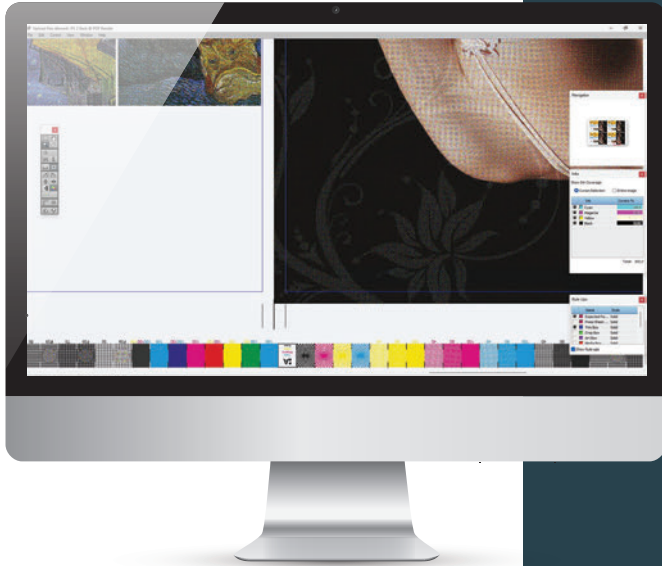
The Apogee workflow solution acts as an integrated command center for production, enabling commercial printers to manage output to any device from a single user interface. As such, it perfectly aligns and fuses different software modules into one streamlined whole, increasing productivity and reducing waste.

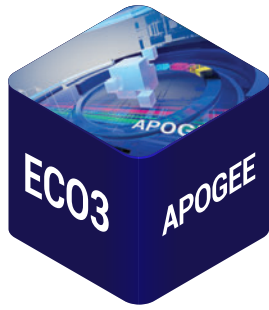
- Build-in preflighting, integrated and automated imposition delivering the optimized sheet layout, innovative color management for any type of output, comprehensive support for versioning, shared resources, and load balancing are just a few examples of how Apogee makes a difference in production environments.
- Expand the capabilities of packaging with a dedicated layout editor to review packaging designs, nest designs to optimize media usage, and generate die cuts.
- For the production of short-run orders, Apogee links into the Digital Front End (DEF) of presses and specifies all required production parameters.
- Increase your Point of Purchase /Point of Sale or even banner and poster offering by using Apogee to prepare wide format output.

Depending on your needs, Apogee is deployed on your hardware and runs within your premises. However, if you wish to offload your IT staff, Apogee can run cloud-based offering prepress operators an identical experience as the on-premise solution. However, your print buyer will notice a difference when uploading and approving print orders as the bandwidth of the data center is superior to the one of your production facility.

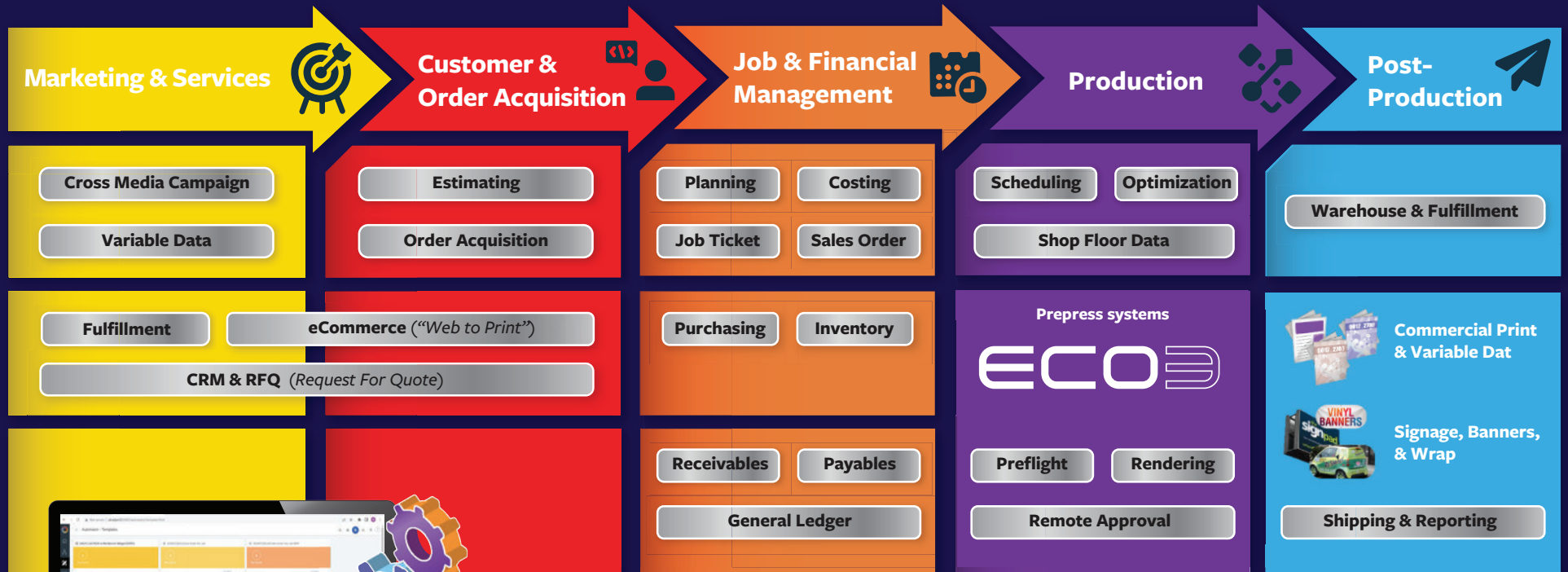
Apogee WebApproval

Expand your integrated production system with a web portal for online collaboration: Apogee WebApproval enables both your clients and your colleagues to access jobs in a secure, password-protected manner, from their desktop computer or mobile device using a standard web browser. They can cooperate and collaborate, upload files, review pages, and approve jobs. Thanks to WebApproval, you facilitate file exchange and shorten approval cycles, which results in fewer errors and more satisfied customers.





ePS - ECO3 Ecosystem



ePS Automator and Actionable Insights

Suite certified • Out-of-the-box automated workflows



“The integration of ECO Apogee and ePS Technique is impressive. We consider Technique’s versioning module very powerful. A large amount of our production contains multiple versions. For orders with multiple address changes alone, the integration of the systems saves us 15 to 20 minutes per printing order.”

David Van De Velde

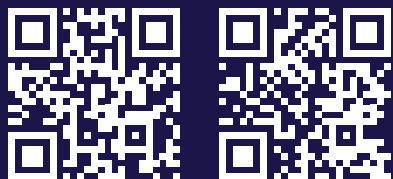
Prepress Manager, T’Hooft



“We recently adopted ePS Tharstern as our MIS Partner to work alongside ECO3’s Apogee Prepress workflow and the integration has proved seamless. The JDF capabilities of Tharstern, working alongside the prepress software has delivered us a near 100% JDF-enabled workflow throughout the whole business.”

Jamie Awford

Prepress Manager, Stephens & George Limited



Scan to
*Join the
evolution*

