

Press



Press units: **Double sided**
 Average runlength: **100000** rotations
 Average sheet size: **0.881** m²
 m² of plates : **718** m²

Paper



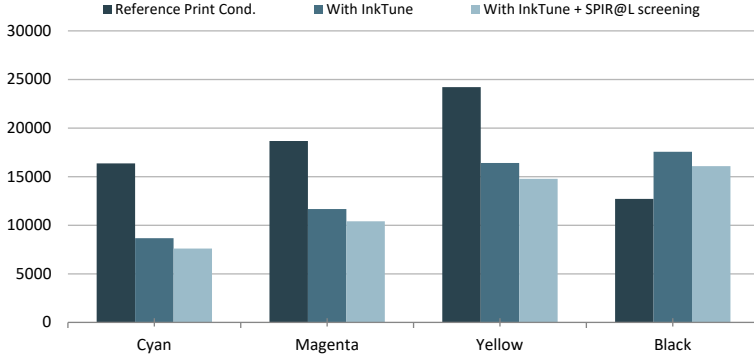
Papertype : **Light Weight Coated**
 Grammage: **55** gr/m²
 Total paper used (*): **470.3** tonnes
8,550,530 m²

Ink

Ink mileage: **Consumption** Custom
 CMY: **1.65** g/m²
 Black: **1.50** g/m²
Price/kg
 Cyan: **4.0** Magenta: **4.0** Yellow: **4.0** Black: **3.5** €
 Total ink usage: **18438 Kg = 71941 €**



Ink cost for tested jobs



Estimated Ink Savings For 194 sample jobs

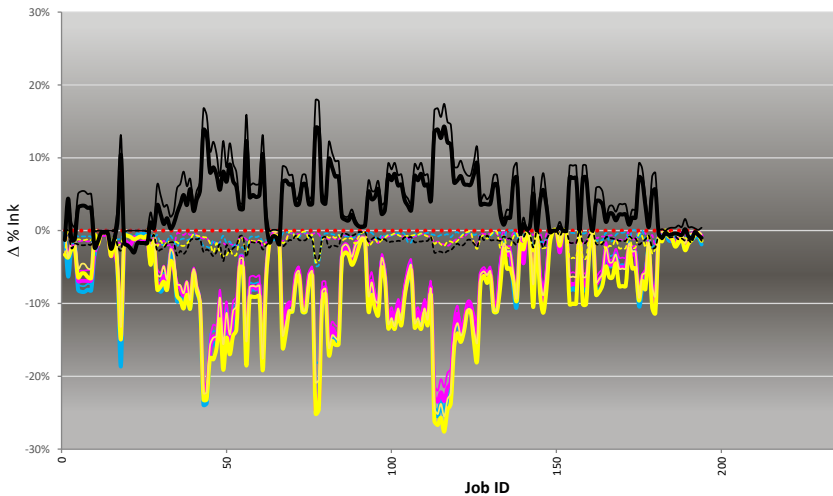


	InkTune	SPIR@L	Total ECO ³
Amount of jobs	177	192	194
Average Ink cost save:	-24.6%	-9.9%	-32.1%
Amount of Ink saved (total):	4237	1414	5651 [Kg]
Ink mileage improvement:	0.25	0.08	0.33 [g/m ²]
Total Ink cost save:	17641	5446	23088 €
Ink savings /tonne paper:	9.01	3.01	12.02 [Kg]
Ink savings /m ² of plates:	24.56	7.58	32.14 €



Ink Change per job

Legend for Ink Change per job:
 Cyan Ink after ECO3 (solid blue), Cyan Ink after InkTune (dashed blue), Cyan Ink after SPIR@L (dotted blue), Original Ink (dotted red)
 Magenta ink after ECO3 (solid magenta), Magenta Ink after InkTune (dashed magenta), Magenta Ink after SPIR@L (dotted magenta)
 Yellow ink after ECO3 (solid yellow), Yellow ink after InkTune (dashed yellow), Yellow ink after SPIR@L (dotted yellow)
 Black Ink after ECO3 (solid black), Black Ink after InkTune (dashed black), Black Ink after SPIR@L (dotted black)



Distribution of ink savings

Legend for Distribution of ink savings:
 Distribution of relative ink savings by InkTune (grey bars)
 Distribution of relative ink savings by SPIR@L (purple bars)
 Distribution of relative Ink savings by InkTune + SPIR@L (red bars)

